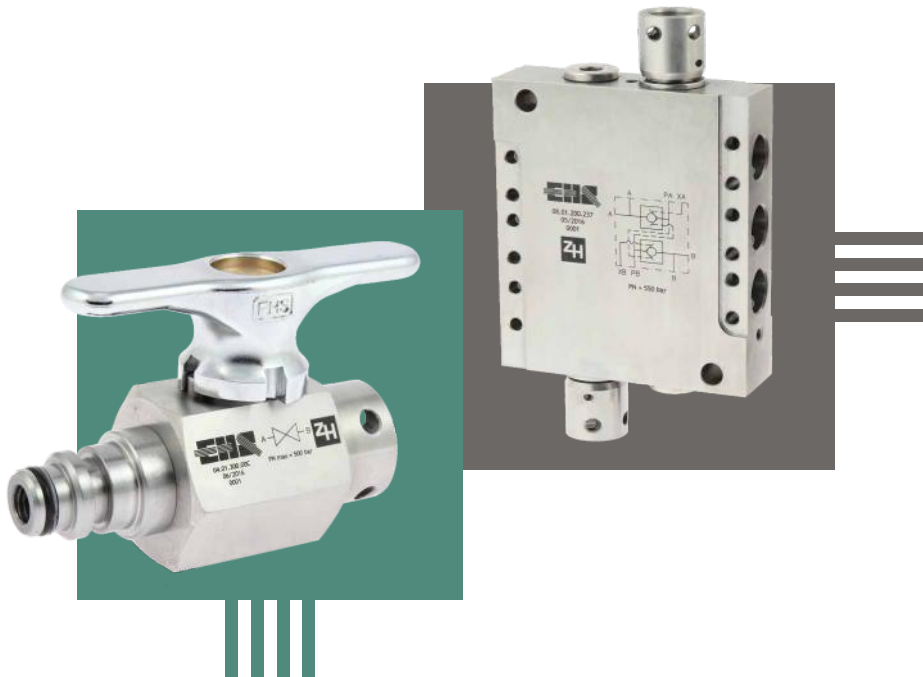




HYDRAULIC SYSTEMS

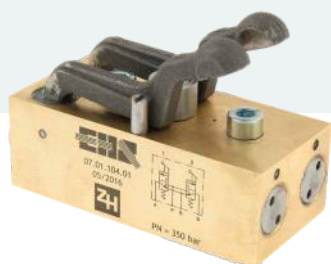
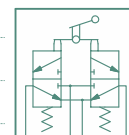




4/3 DIRECTIONAL CONTROL VALVE HV4 MANUALLY OPERATED



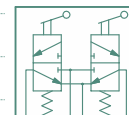
Operating pressure	350 bar
Size	DN4
Number of output ports	2



4/3 DIRECTIONAL CONTROL VALVE MANUALLY OPERATED



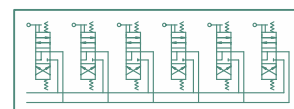
Operating pressure	350 bar
Size	DN4
Number of output ports	2



DIRECT PILOT CONTROL



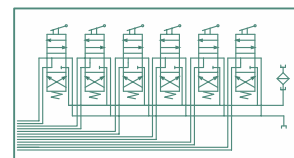
Working pressure	350 bar
Size	DN10, DN12, DN19
Connection type	female STECKO 10, 12, 19
Control functions	2 - 18



DIVISION PILOT CONTROL PILOT UNIT



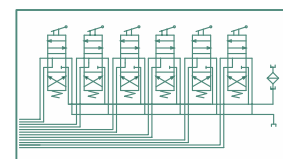
Operating pressure	350 bar
Size	DN4
Connection type	female STECKO 10, 12
Control functions	2 - 24



SPLIT PILOT CONTROL - PILOT UNIT, MAIN CONTROL UNIT



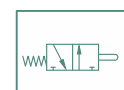
Operating pressure	350 bar
Size	DN10, DN12, DN19
Connection type	female STECKO 10, 12, 19
Control functions	2-24



3/2 DIRECTIONAL CONTROL VALVE CARTRIDGE 2/2 PILOT OPERATED CHECK VALVE CARTRIDGE



Operating pressure	350 bar (3/2-way)
Operating pressure	550 bar (2/2-way)
Size	DN10, DN12, DN19
Connection type	female STECKO 10, 12, 19
Control	hydraulic



MULTIHOSES



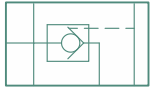
Operating pressure	350 bar
Size	DN3, DN4
Connection type	multiplug threaded, Rd65 - Rd85
Number of hoses	8 - 24
End of sleeves	straight or angled 135°



PILOT TO OPEN CHECK VALVE DN10, DN12



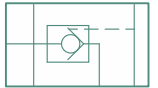
Operating pressure	550 bar
Supply pressure	350 bar
Size	DN10, DN12
Connection type	female STECKO 10, 12



PILOT TO OPEN CHECK VALVE DN19



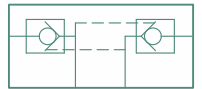
Operating pressure	550 bar
Supply pressure	350 bar
Size	DN19
Connection type	female STECKO 10, 12, 19



DOUBLE PILOT TO OPEN CHECK VALVE DN10



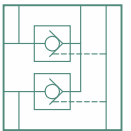
Operating pressure	550 bar
Supply pressure	350 bar
Size	DN10
Connection type	female STECKO 10



TWIN PILOT TO OPEN CHECK VALVE DN10, DN12



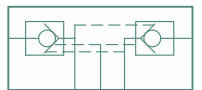
Operating pressure	550 bar
Supply pressure	350 bar
Size	DN10, DN12
Connection type	female STECKO 10, 12



DOUBLE PILOT TO OPEN CHECK VALVE WITH ADDITIONAL CONTROL



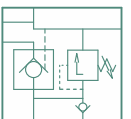
Operating pressure	550 bar
Supply pressure	350 bar
Size	DN10, DN12
Connection type	female STECKO 10, 12



PILOT TO OPEN CHECK VALVE BLOCK



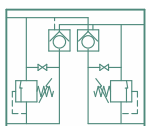
Operating pressure	550 bar
Supply pressure	350 bar
Relief valve pressure setting range	100 - 530 bar
Size	DN10, DN12
Connection type	female STECKO 10, 12



PILOT TO OPEN CHECK VALVE BLOCK



Operating pressure	550 bar
Supply pressure	350 bar
Relief valve pressure setting range	100 - 530 bar
Size	DN10, DN12
Connection type	female STECKO 10, 12



FILTERS



Operating pressure	350 bar
Size	DN10 - DN31
Connection type	STECKO 10, 12, 19, 25, 31
Range of filtration	10 - 315 µm.



CHECK VALVES



Operating pressure	350 bar
Size	DN10 - DN51
Connection type	STECKO 10, 12, 19, 25, 31, 38, 51



CUT-OFF VALVES



Operating pressure	350 bar
Size	DN10 - DN51
Connection type	STECKO 10, 12, 19, 25, 31, 38, 51



PRESSURE RELIEF VALVES



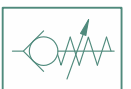
Pressure setting range	100 - 530 bar
Category	IB, II, III, IV
Connection type	STECKO 10, 12, 19, threaded



THRESHOLD VALVES, PRESSURE REDUCING VALVES, PRESSURISING VALVES



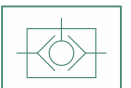
Operating pressure	350 bar
Size	DN10, DN12, DN19
Connection type	STECKO 10, 12, 19



LOGIC VALVES SHUTTLE VALVE, DIRECTED SHUTTLE VALVE SOFT START VALVE



Operating pressure	350 bar
Size	DN10, DN12, DN19
Connection type	STECKO 10, 12, 19



MANOMETERS AND CONNECTION SYSTEMS



Operating pressure	600 bar
Connection type	STECKO 6, 10, M20x1,5

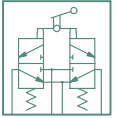




4/3 DIRECTIONAL CONTROL VALVE HV10 MANUALLY OPERATED



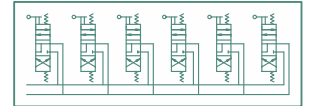
Operating pressure	350 bar
Size	DN10, DN12
Number of output ports	2



DIRECT CONTROL BLOCK HV10



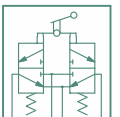
Operating pressure	350 bar
Size	DN10, DN12
Control functions	2-12



4/3 DIRECTIONAL CONTROL VALVE MANUALLY OPERATED



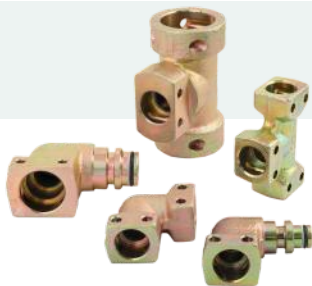
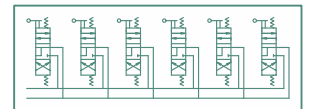
Operating pressure	350 bar
Size	DN10
Number of output ports	2



DIRECT CONTROL BLOCK MANUALLY OPERATED



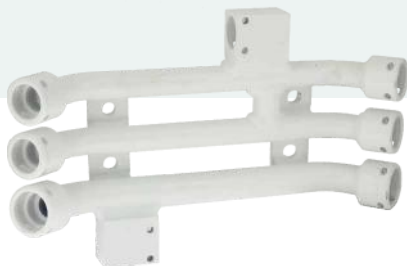
Operating pressure	350 bar
Size	DN10
Connection type	female STECKO 10, 12
Control functions	2 - 10



FITTINGS



Operating pressure	90 - 640 bar
Size	DN6 - DN63
Connection type	STECKO 6, 10, 12, 19, 25, 31, 38, 51, 63



MAIN COLLECTOR



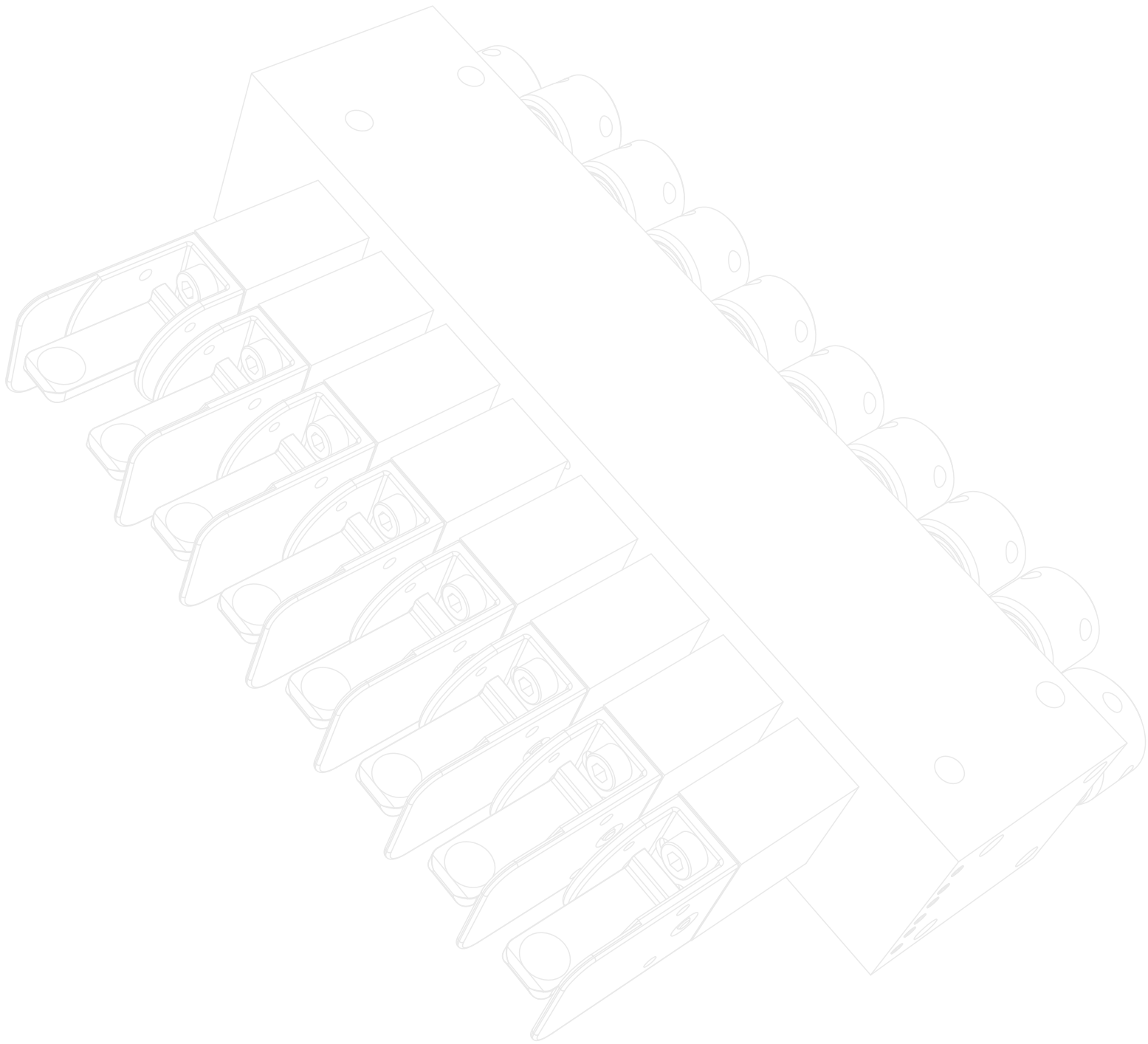
Operating pressure	90 - 640 bar
Size	DN19 - DN63
Connection type	female STECKO 19, 25, 31, 38, 51, 63



HIGH PRESSURE HYDRAULIC HOSES



Operating pressure	max 640 bar
Size	DN6 - DN63
Connection type	STECKO 6, 10, 12, 19, 25, 31, 38, 51, 63



HYDRAULIC SYSTEMS

EHS Sp. z o.o.
Siemońska 50, 42-503 Będzin
tel: +48 32 761 75 00
fax: +48 32 761 75 09
info@ehssystem.pl www.ehssystem.pl

